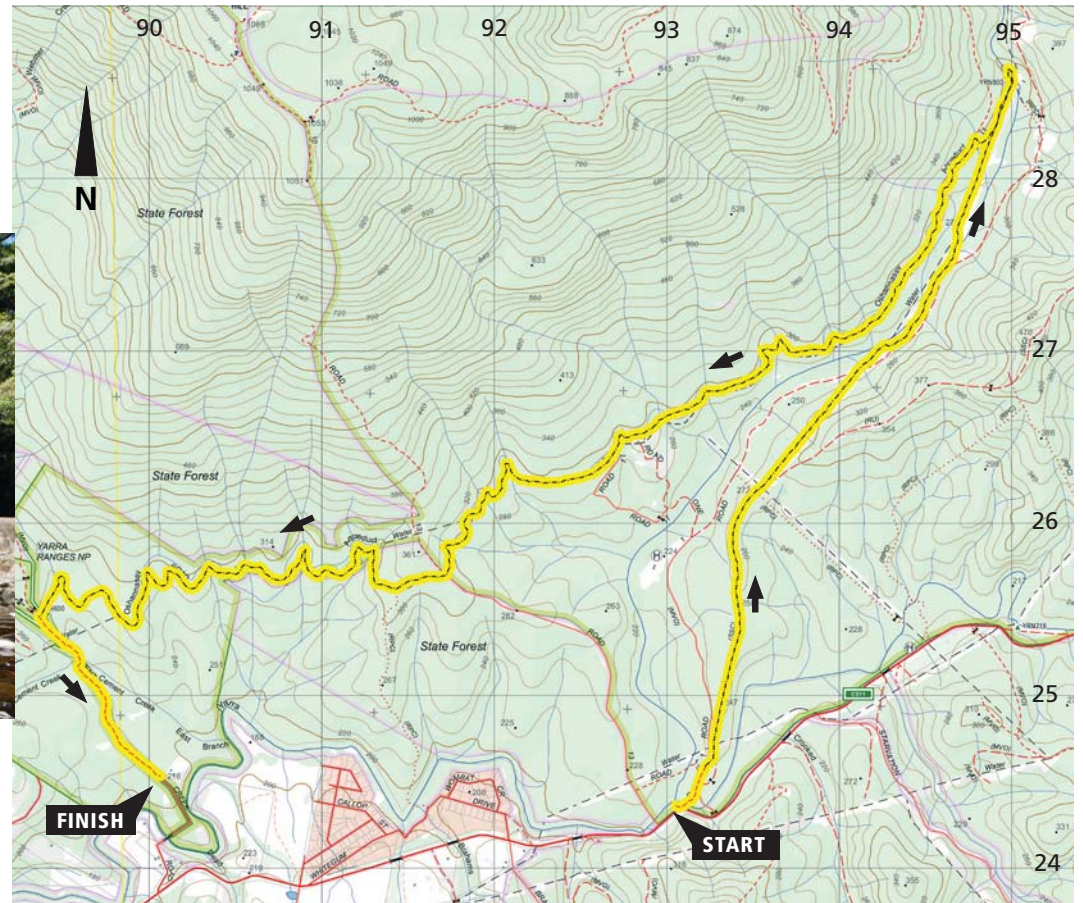


# 8 O'Shannassy Aqueduct: Diversion Weir to Cement Creek Road

The highlights are O'Shannassy Weir, 8km walking beside the historic 1914 open channeled O'Shannassy aqueduct, fern tree gullies, a section where all the trees were chopped off at 50 metres high by a storm and enjoying the Redwood Forest.

- Distance** 16 km
- Type** Car shuffle
- Duration** 5 hours, including breaks
- Grading** Easy /Medium
- Total Ascent** 280 metres.  
270 metres descent.  
Gently undulating, mostly flat
- Path** 90% foot track,  
10% unsealed road.



Vicmap Topo 1:25,000 T8022-1-5 McMahons Creek South

## GETTING TO THE START

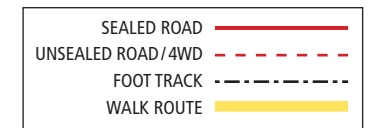
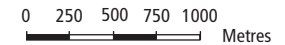
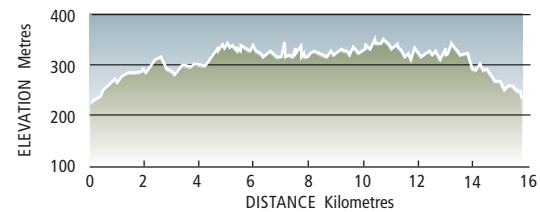
From the Warburton Visitor Centre take the Warburton Highway (B380) and Woods Point Road (C511) east for approx. 11 km to Cement Creek Road on the left. Drive about 1 km along Cement Creek Road to leave cars at the parking area near Redwood Forest (end of walk). Return to Woods Point Road and follow it for 3km to the O'Shannassy Weir access road where there is an off-road parking area for the start of the walk.

## WALK DESCRIPTION

To start the walk proceed past the locked gate and follow Road One a short way to an intersection where a track branches off on the right. Follow this track north and northeast to O'Shannassy Weir following signs at the intersections.

The weir is a good place for morning tea. From there follow the Aqueduct track southwest, veering more to the west as you proceed. The track is wide and open, grassy in places, and easy to follow. An open area where another large track crosses north-south could be a good place for lunch.

Continue along the O'Shannassy Aqueduct track until reaching Cement Creek Road. Climb over the locked gate and follow Cement Creek Road to Redwood Forest and the cars.



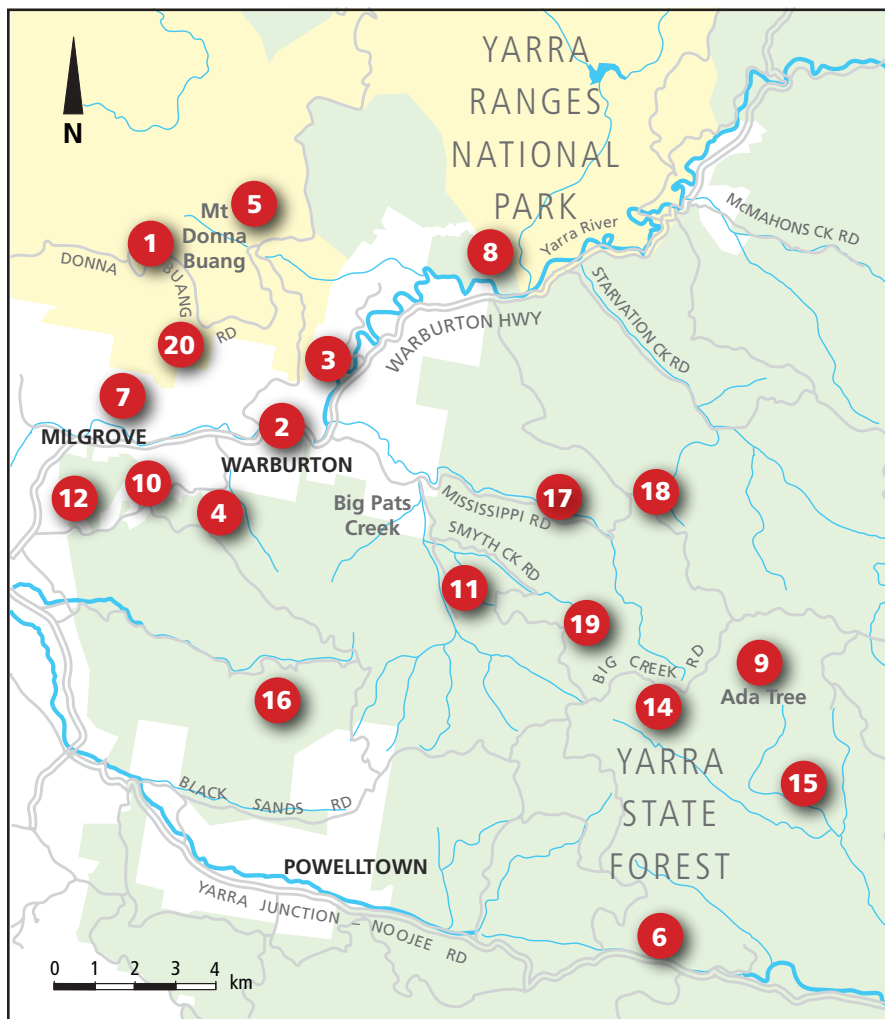
## WALK LOCATIONS



Melbourne  
Bushwalkers

FEDERATION WEEKEND  
27-29 OCTOBER 2017

Bushwalking Victoria  
towards better bushwalking



This Walk Sheet describes a bushwalk, part of Bushwalking Victoria's Federation Walks 2017 program in the Warburton and Powelltown areas on 28th and 29th October 2017. Bushwalking Victoria and the host club, Melbourne Bushwalkers Inc., their members and walk leaders cannot accept any responsibility for errors, omissions or changes in circumstances on which this information is based. Nor can they accept any responsibility for any loss or injury sustained by any person using this Walk Sheet.

The map is provided solely as a guide to the subject walk. The map is not intended to be used as a substitute for the applicable Vicmap Topographic map(s). Vicmap Topographic maps may be purchased in print form from map shops and digital (PDF) maps may be purchased online at – <http://services.land.vic.gov.au/maps/imf/search/Topo30Front.jsp>

Maps provided courtesy of Vicmap, Department of Environment, Land, Water & Planning (DELWP), copyright© the State of Victoria, DELWP, 2015.

The State of Victoria and its suppliers do not warrant the accuracy or completeness of information in these maps and any person using or relying upon such information does so on the basis that the State of Victoria shall bear no responsibility or liability whatsoever for any errors, faults, defects or omissions in the information.