

6 High Lead Carpark – Reids Mill – Powelltown

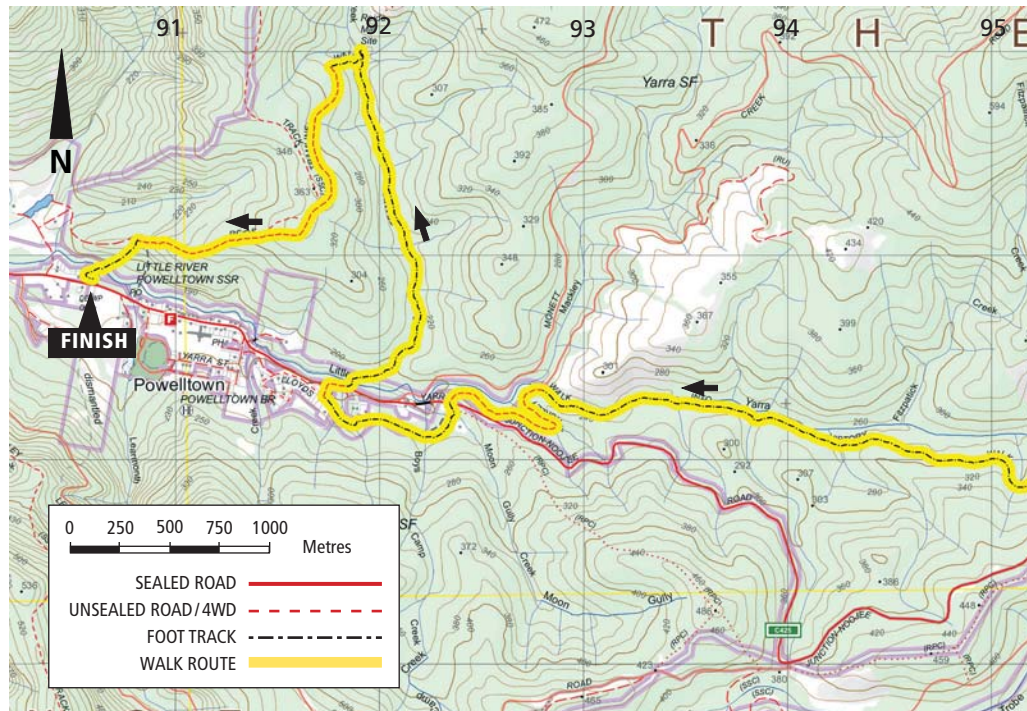
The beautiful 'Walk into History' Track follows historic timber tramways surrounded by giant mountain ash and ferns. The remnants of an historic railway tunnel may also be seen at The Bump.



Distance 14.5 km
Type Car Shuffle
Duration 5 hours including breaks
Grading Easy / Medium. No big hills, some climbing at the Reids Mill loop
Total Ascent 300 metres, 400 metres descent
Path 80% foot tracks, 20% unsealed roads. River crossings are via log bridges or stepping stones.

GETTING TO THE START

From the Warburton Visitor Centre, take the Warburton Highway (B380) to Yarra Junction, then turn left at the traffic lights onto Powelltown-Noojee Road (C425). Continue to Powelltown Historic Park, a total distance of 23.5km. A car shuffle is required to the High Lead car park, which is a further 10.5km along the Powelltown-Noojee Road.

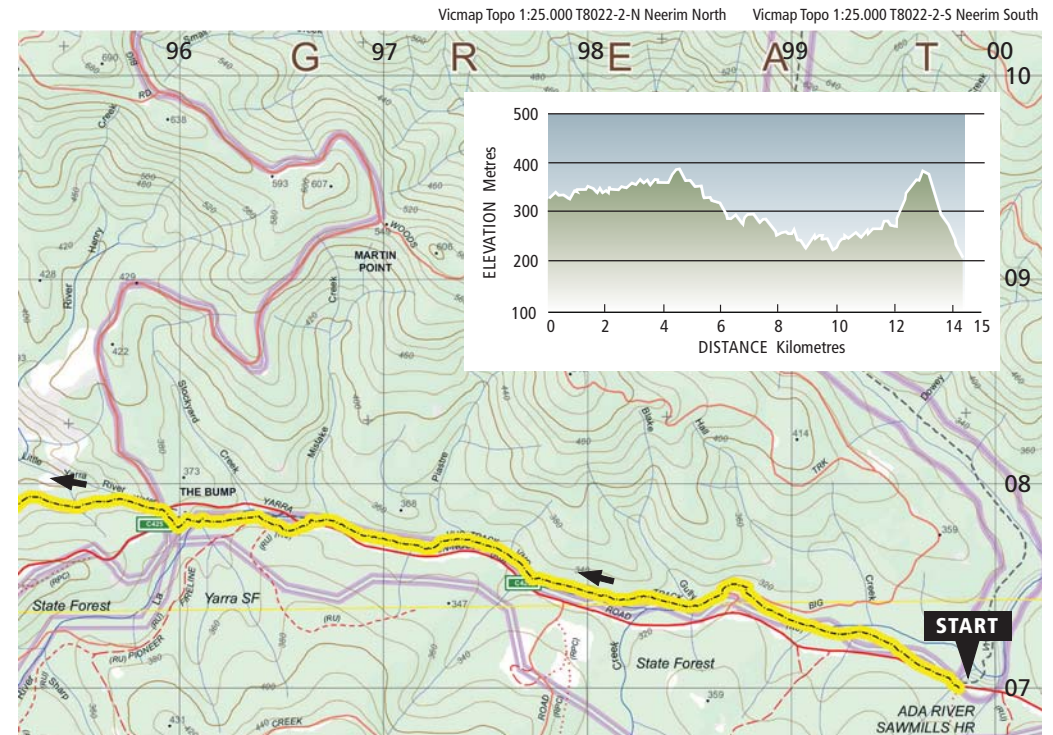


WALK DESCRIPTION

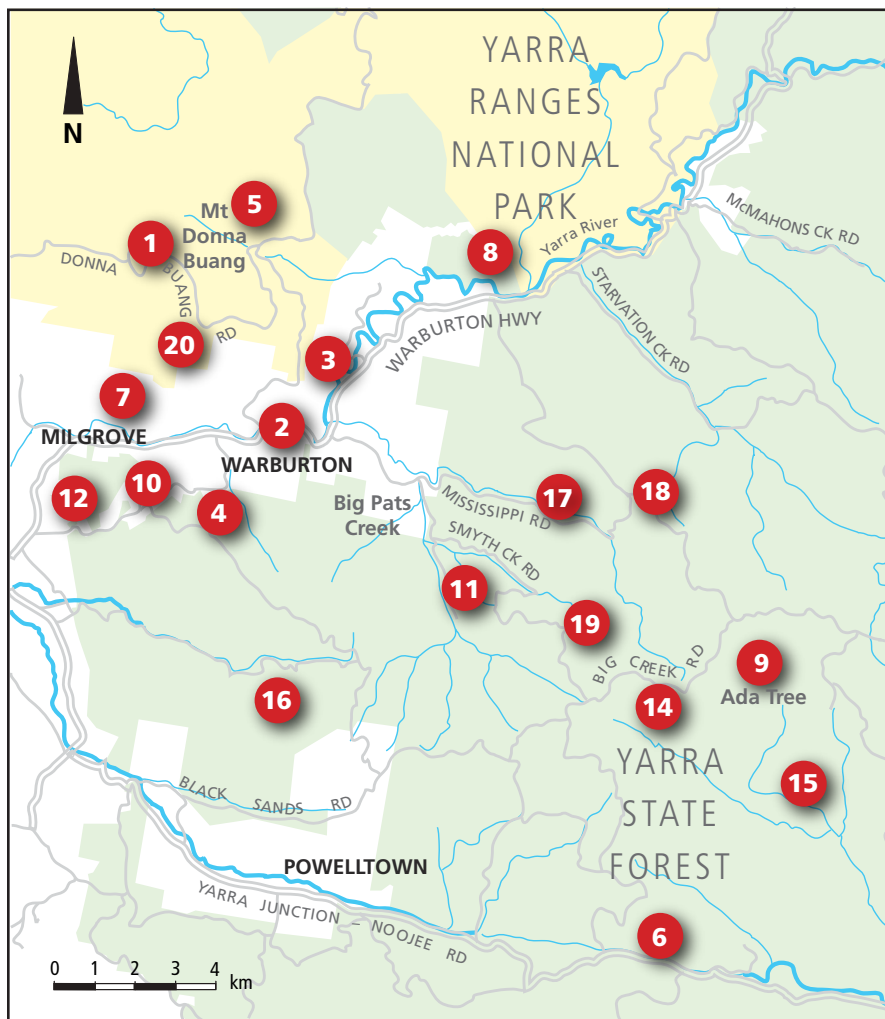
Starting at the High Lead car park, cross the Powelltown-Noojee Road and head west along the sign-posted 'Walk into History' Track. The track climbs gently upstream along the Latrobe River. Near GR956078 it is necessary to leave the river and take an unmarked foot track up the hill to Powelltown-Noojee Road. Cross to Pioneer Fireline Road (look for a track marker). Follow this road for several hundred metres until resuming the signposted 'Walk into History' towards The Bump. This is the divide between the Latrobe and Little Yarra River catchments.

From The Bump, the track descends the old tramline route, following the Little Yarra River towards the outskirts of Powelltown. At Mackley Creek Road, turn left and continue to the junction with the Powelltown-Noojee Road where the 'Walk into History' Track is picked up again. This leads to a former Boys Camp, now part of the Yarra State Forest. Proceed across the mown grass to pick up the track heading towards Powelltown. This is followed to the outskirts of town and a junction with Lloyds Road. Drop down to the Powelltown-Noojee Road.

It is then necessary to follow the Powelltown-Noojee Road heading away from Powelltown for about 100m until reaching a car park and sign post marking 'Reids Mill Loop'. Ascend through forest and at the top of the gentle climb the remains of the old mill can be found. Continue rising more steeply around the loop to the top of a hill before dropping down to the end of the walk at the Powelltown Historic Park.



WALK LOCATIONS



Melbourne
Bushwalkers

FEDERATION WEEKEND
27-29 OCTOBER 2017

Bushwalking Victoria
towards better bushwalking

This Walk Sheet describes a bushwalk, part of Bushwalking Victoria's Federation Walks 2017 program in the Warburton and Powelltown areas on 28th and 29th October 2017. Bushwalking Victoria and the host club, Melbourne Bushwalkers Inc., their members and walk leaders cannot accept any responsibility for errors, omissions or changes in circumstances on which this information is based. Nor can they accept any responsibility for any loss or injury sustained by any person using this Walk Sheet.

The map is provided solely as a guide to the subject walk. The map is not intended to be used as a substitute for the applicable Vicmap Topographic map(s). Vicmap Topographic maps may be purchased in print form from map shops and digital (PDF) maps may be purchased online at – <http://services.land.vic.gov.au/maps/imf/search/Topo30Front.jsp>

Maps provided courtesy of Vicmap, Department of Environment, Land, Water & Planning (DELWP), copyright© the State of Victoria, DELWP, 2015.

The State of Victoria and its suppliers do not warrant the accuracy or completeness of information in these maps and any person using or relying upon such information does so on the basis that the State of Victoria shall bear no responsibility or liability whatsoever for any errors, faults, defects or omissions in the information.