

18 Richards Tramline Longer Loop

Highlights include: interesting and varied vegetation; some spectacular tree ferns; fauna such as lyrebirds, wallabies, yellow-tailed black cockatoos; enjoying the sounds of frogs; and the many and varied wild flowers. You will walk through a forest of silvertop ash, messmates, and acacias and enjoy mountain grey gum and mountain ash trees.

- Distance** 21km
- Type** Circuit
- Duration** 5 hours including breaks
- Grading** Medium/Hard
- Total Ascent** 500 metres, no steep climbs
- Path** 60% foot track, 40% dirt road.



STATE LIBRARY OF VICTORIA

GETTING TO THE START

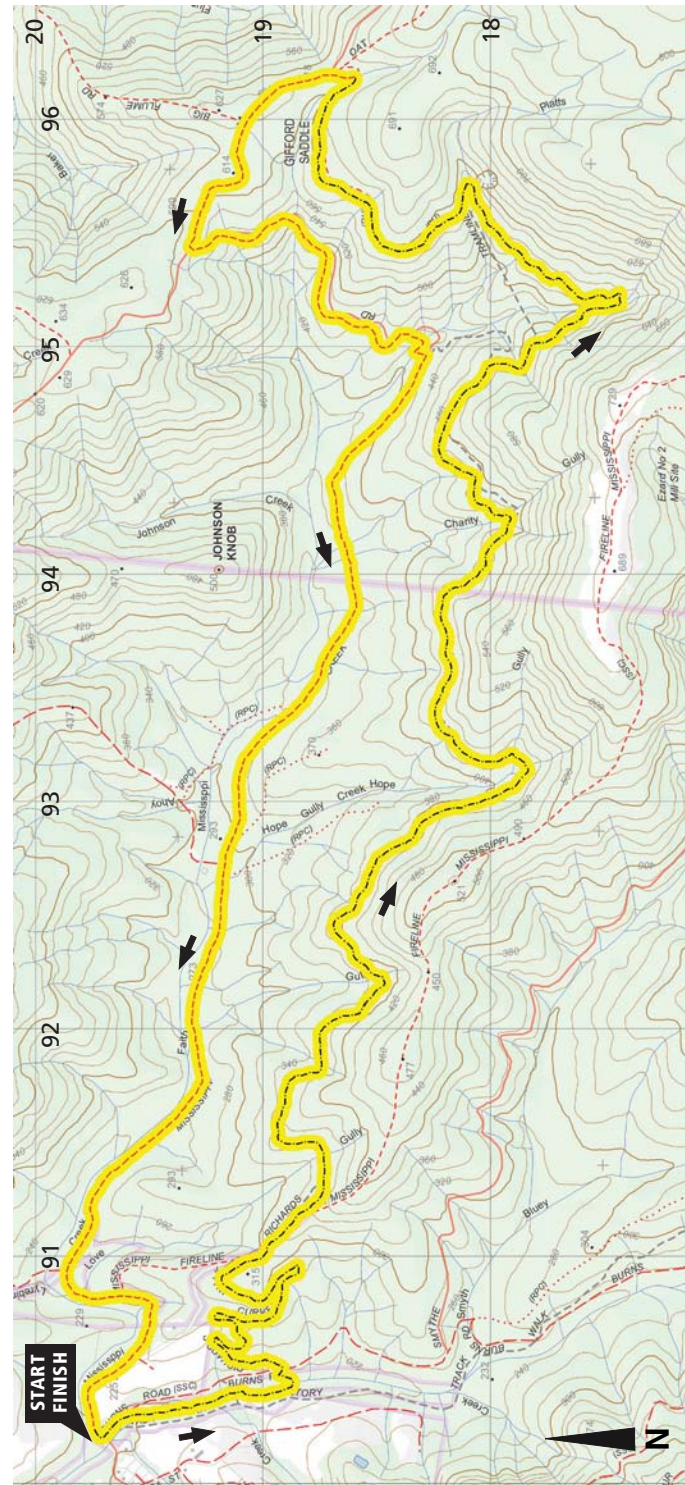
From the Warburton Visitor Centre, head east and take the Woods Point Road (C511) towards East Warburton. Turn right into Riverside Drive immediately after the second crossing of the Yarra River after leaving Warburton. After 600m turn left into Big Pats Creek Road. After approx. 2.5km take a sharp left just after which the bitumen ends. In approx. 30m cross Big Pats Creek. After crossing the creek park the cars. Around Big Pats Creek Bridge there is adequate parking for about 10 cars.

WALK DESCRIPTION

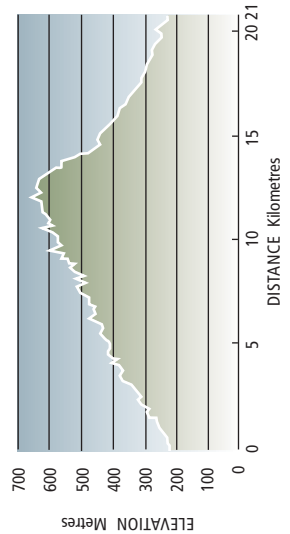
This walk, which follows an old logging tramline, winds its way up the Mississippi Valley towards Starvation Creek. We begin at the Big Pats Creek Bridge following the 'Walk into History' Track along the creek for approx. 500m before reaching Big Pats Creek Recreation Area. There is a pit toilet available here. From the recreation area, follow Richards Tramline Track which is clearly marked. The first 2km of Richards Tramline track is known as 'The Curves', getting its name from the series of bends constructed along the tramline to allow for a steady descent from Mississippi Fireline towards Big Pats Creek.

The walk follows the old tramways which once formed a link between outlying sawmills, Big Pat's Creek and the La La siding in Warburton. The track follows a gentle gradient with no strenuous ups or downs.

The first half of the walk is a steady slow climb of 500m over approx. 11km. The tramline track ends as it intersects with Brahams Road, turn left here and after approx. 700m turn left again onto Mississippi Creek Road. The last part of the walk on Mississippi Creek Road, a 4WD track, provides easy walking back to the cars, mostly downhill.



Vicmap Topo 1:25,000 T8022-2-N Neerim North



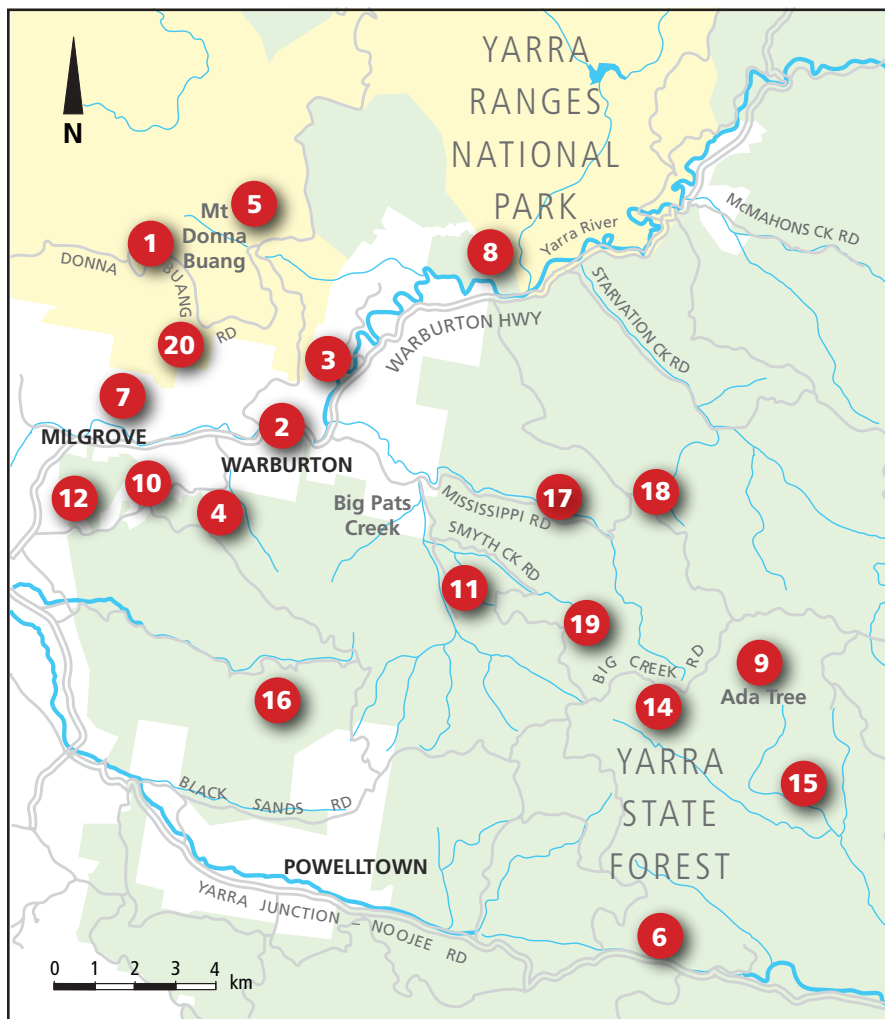
WALK LOCATIONS



Melbourne
Bushwalkers

FEDERATION WEEKEND
27-29 OCTOBER 2017

Bushwalking Victoria
towards better bushwalking



This Walk Sheet describes a bushwalk, part of Bushwalking Victoria's Federation Walks 2017 program in the Warburton and Powelltown areas on 28th and 29th October 2017. Bushwalking Victoria and the host club, Melbourne Bushwalkers Inc., their members and walk leaders cannot accept any responsibility for errors, omissions or changes in circumstances on which this information is based. Nor can they accept any responsibility for any loss or injury sustained by any person using this Walk Sheet.

The map is provided solely as a guide to the subject walk. The map is not intended to be used as a substitute for the applicable Vicmap Topographic map(s). Vicmap Topographic maps may be purchased in print form from map shops and digital (PDF) maps may be purchased online at – <http://services.land.vic.gov.au/maps/imf/search/Topo30Front.jsp>

Maps provided courtesy of Vicmap, Department of Environment, Land, Water & Planning (DELWP), copyright© the State of Victoria, DELWP, 2015.

The State of Victoria and its suppliers do not warrant the accuracy or completeness of information in these maps and any person using or relying upon such information does so on the basis that the State of Victoria shall bear no responsibility or liability whatsoever for any errors, faults, defects or omissions in the information.