



Walk 5: Grampians Peak Trail – Coppermine to Dead Bullock Creek

Northern Grampians

Length: 10km **Style:** Car shuffle

Difficulty: Medium/Hard **Duration:** 7 Hr

Total uphill : 321m **Gradient:** Mostly gradual up and down.

Path: All off-track through recently burnt scrub. Majority not too dense. Some sections of rock platforms make for some easier going. Last 2km along a rough rocky ridge.

Highlights: Opportunity to preview a section of the Grampians Peak Trail (GPT) prior to construction. See previously unseen views of the iconic Briggs Bluff and Mt Difficult from a new perspective.



Start: Drive north on Northern Grampians Rd for 3.7km and turn right onto Pohlner's Rd. Follow this for 8.5km, as it eventually veers southward and climbs up onto the range until you come to the Coppermine Track turnoff. Drive down this track for about 1km to the pink taped trail head. (Grid Ref 262125). A bus will collect you at the end of the walk at Dead Bullock Creek to return you to your vehicles. **Driving distance** 13.2km **Driving time:** 18min.

Walk Description: Following the pink tapes, you climb gradually to gain the rocky ridgeline. A series of rocky platforms make for some easier walking for a time. Views are had to the west of other rocky escarpments. The track then swings around to the east through a gap in the cliffs and follows a creek which culminates in a beautiful rocky cascade, finishing in a waterfall at the bottom. From the top of the cascade, great views are to be had of Briggs Bluff and the Mt Difficult Range to the south.

Descending into the valley, you pick up part of an old walking trail for a short distance, before swinging around south westerly to follow the base of a rocky cliff line. The track then traverses gradually up to gain the top of the ridge, where again you are rewarded with spectacular views of the Mt Difficult Range. The trail follows the top of this rocky ridgeline for the next 1.8km before angling down gradually towards the Roses Gap Road and Dead Bullock Creek. Here you should follow the road 400m to Dead Bullock Creek carpark (watch out for traffic), where a bus will return you to your vehicles.

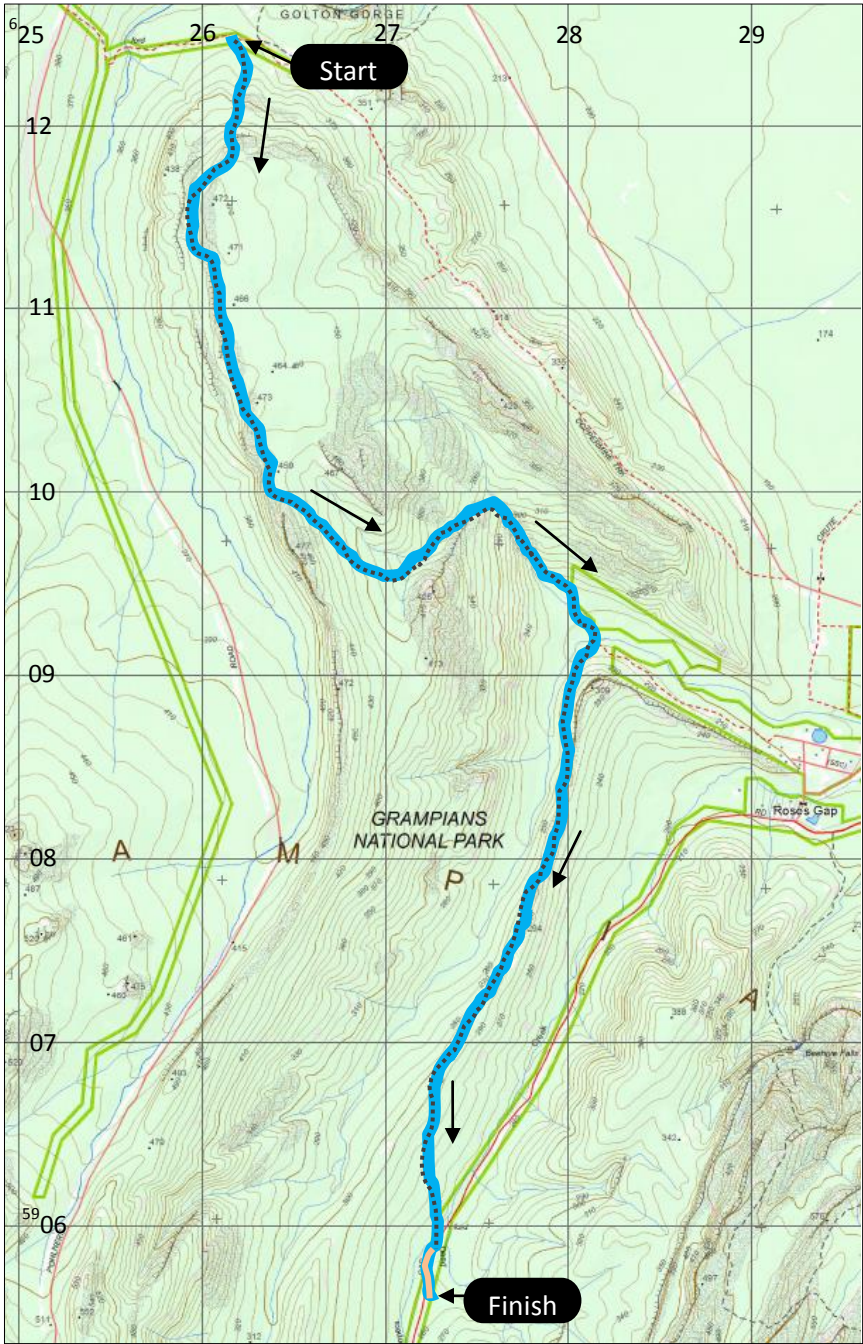
Cautions: As this is all off-track, gaiters and long clothing are recommended. Care should be taken on any uneven rocky sections and watch your footing at all times. Rocks could be slippery after rain. The pink tapes are hard to spot in some sections, so you should always stick with the group and follow the walk leader. Do not walk ahead of the group.

Facilities: There are no toilet facilities at either end of this walk.

This Walk Sheet describes a bushwalk, part of Bushwalking Victoria's Federation Walks 2016 program in the Northern & Western Grampians on Oct 8th & 9th 2016. Bushwalking Victoria and the host club – Wimmera Bushwalking Club, their members and walk leaders cannot accept any responsibility for errors, omissions or changes to the circumstances on which this information is based. Nor can they accept any responsibility for any loss or injury sustained by any person using this Walk Sheet.



GRAMPIANS PEAK TRAIL Coppermine to Dead Bullock Creek

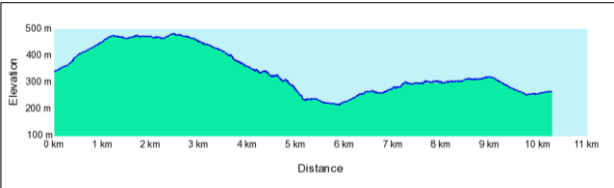
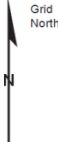


Map base sourced from Vicmap, Department of Environment, Land, Water and Planning (DELWP). Copyright © The State of Victoria, DELWP, 2015

The State of Victoria and its suppliers do not warrant the accuracy or completeness of information in this publication and any person using or relying upon such information does so on the basis that the State of Victoria shall bear no responsibility or liability whatsoever for any errors, faults, defects or omissions in the information.

Walk surfaces	
Road	
Vehicle Track	
Foot Track	
Off Track	
Walk Route	

Vicmap 7324-2-2-N, 7324-2-2-S
1:30,000



This map is provided solely as a guide to the subject walk. The map is not intended to be used as a substitute for the applicable Vicmap Topographic map(s). Vicmap Topographic maps may be purchased in printed form from map shops and digital (PDF) maps may be purchased online at: <http://services.land.vic.gov.au/maps/topo30maps.jsp>