



## Walk 13: Deep Creek

Victoria Range

**Length:** 7.5km      **Style:** Return

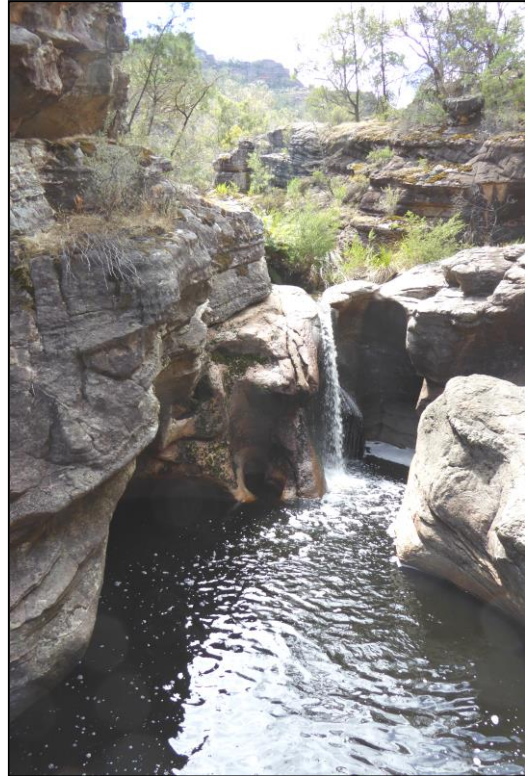
**Difficulty:** Medium      **Duration:** 4.5 hrs

**Total uphill:** 245m      **Gradient:** Gradual – except for one short steep section.

**Path:** Lightly overgrown old path, with some rocky creek-bed sections.

**Highlights:** View of The Fortress, several waterfalls, Billywing Gorge.

**Start:** From Laharum, drive south and take the Brimpaen Road across to the Henty Hwy. Continue south for 26km. Turn left onto the gravel Billywing Road and follow this onto Harrops Track and past the turn-off to Buandik campground. After 3.2km past this turn-off, you'll reach the start of the Fortress walking trail. Park here (Grid Ref 123730)      **Distance to start:** 58km      **Driving time:** 50 min.



**Walk Description:** From the parking area on Harrops Track, begin the walk on the Fortress trail. The first 1.1km is on a nice wide, sandy track. Proceed past the turn-off to the Fortress. When you reach the end of the sandy track, you will proceed along the overgrown walking track on the south side of Deep Creek.

After approx. 400m, you will come to the 'Cool Chamber' – a nice spot to rest on a warm day. Pass through the Cool Chamber and cross the creek. The track then continues on the north side of the creek. After another 300m, the track ascends steeply for a short distance. At the top, you are rewarded with a view of the mighty Fortress.

A steep descent sees you crossing the creek once more to the southern side. An easy walk now passes one set of small falls, followed soon by a very picturesque little gorge with a series of waterfalls. This is a good spot for a break or lunch.

A bit of a tricky traverse around the gorge rim, sees you then following the rocky creek bed for another 500m to the mouth of Billywing Gorge. After admiring this feature, re-trace your path back to the cars.

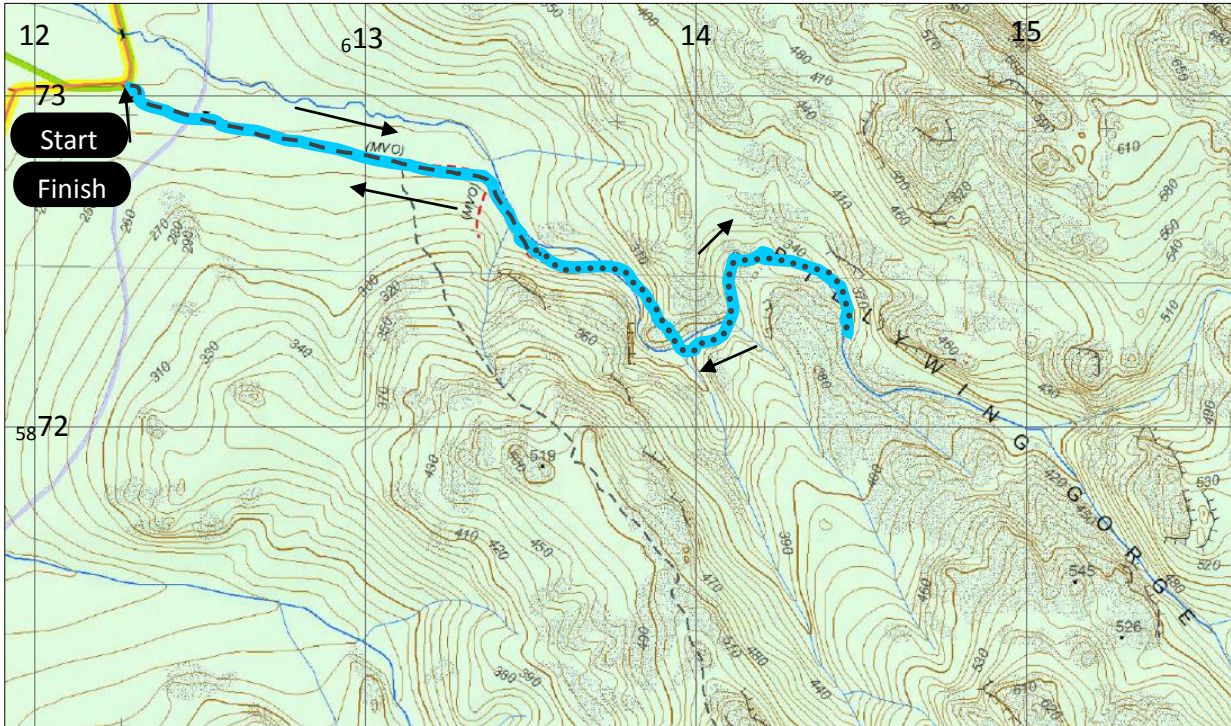
**Cautions:** Though following an old track, this should mostly be considered an off-track walk. Care needs to be taken to follow the correct track. Rocky sections may be slippery if wet. Two or three minor creek crossings required. Good sturdy footwear is recommended and possibly gaiters.

**Facilities:** Nearest toilets are at Buandik campground.

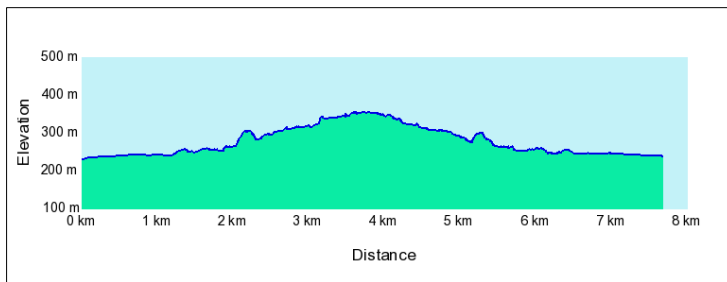
This Walk Sheet describes a bushwalk, part of Bushwalking Victoria's Federation Walks 2016 program in the Northern & Western Grampians on Oct 8<sup>th</sup> & 9<sup>th</sup> 2016. Bushwalking Victoria and the host club – Wimmera Bushwalking Club, their members and walk leaders cannot accept any responsibility for errors, omissions or changes to the circumstances on which this information is based. Nor can they accept any responsibility for any loss or injury sustained by any person using this Walk Sheet.



# DEEP CREEK



Vicmap: 7323-2-4-4 1:30,000



Map base sourced from Vicmap, Department of Environment, Land, Water and Planning (DELWP). Copyright © The State of Victoria, DELWP, 2015

The State of Victoria and its suppliers do not warrant the accuracy or completeness of information in this publication and any person using or relying on such information does so on the basis that the State of Victoria shall bear no responsibility or liability whatsoever for any errors, faults, defects or omissions in the information.

This map is provided solely as a guide to the subject walk. The map is not intended to be used as a substitute for the applicable Vicmap Topographic map(s). Vicmap Topographic maps may be purchased in printed form from map shops and digital (PDF) maps may be purchased online at: <http://services.land.vic.gov.au/maps/topo30maps.jsp>